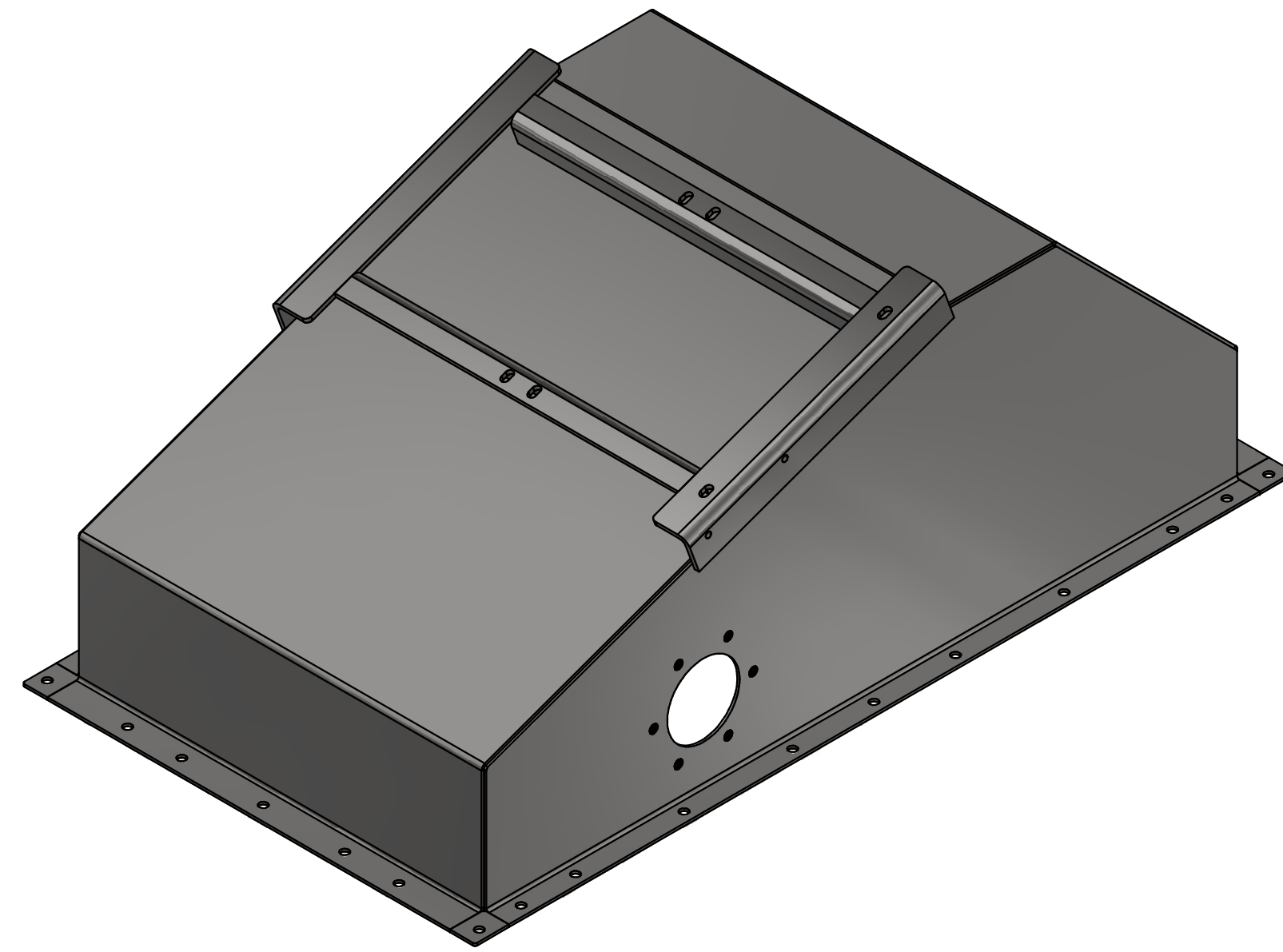


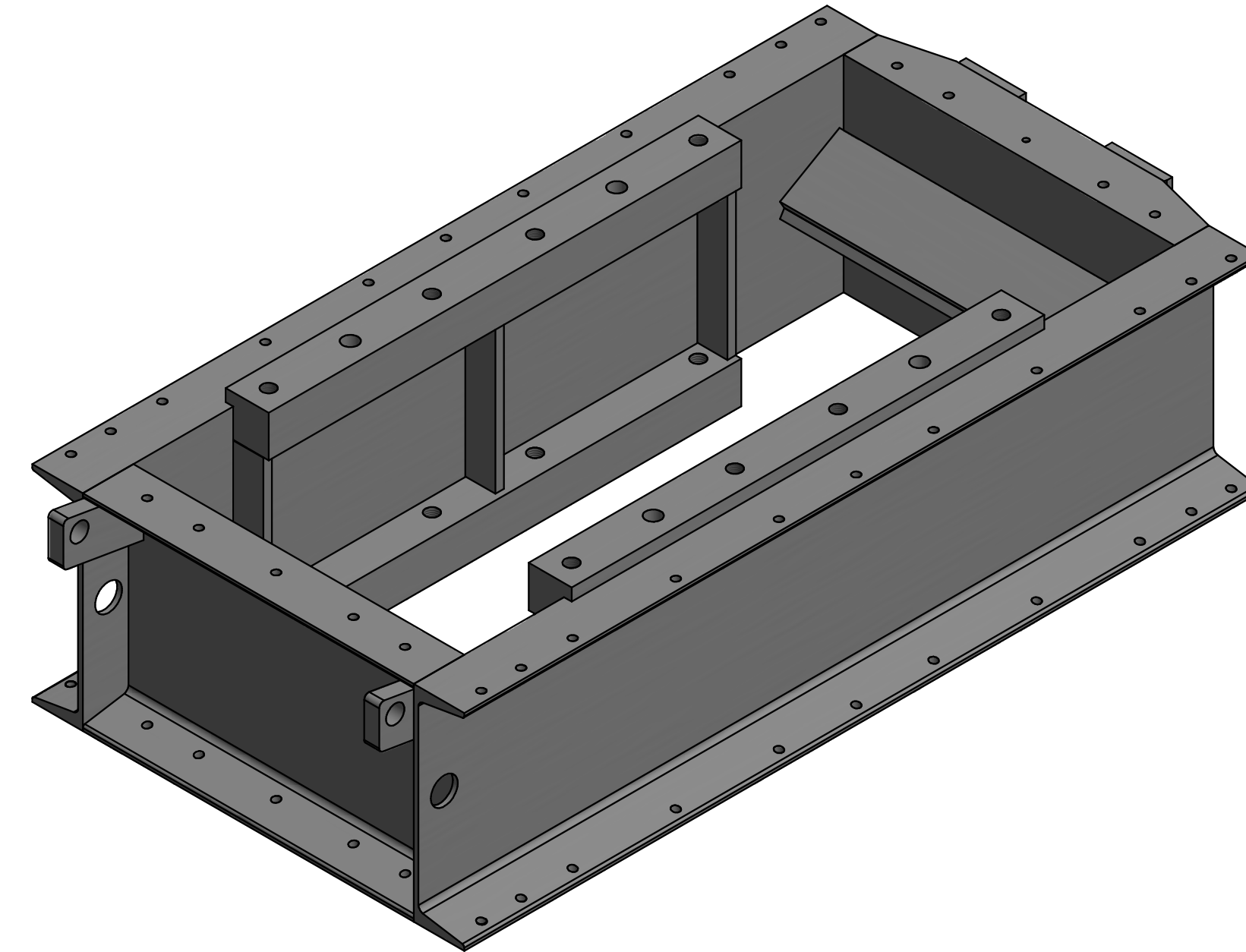
MODEL 'T88M' MOTION PARTS DIAGRAM

(HOUSING PARTS)

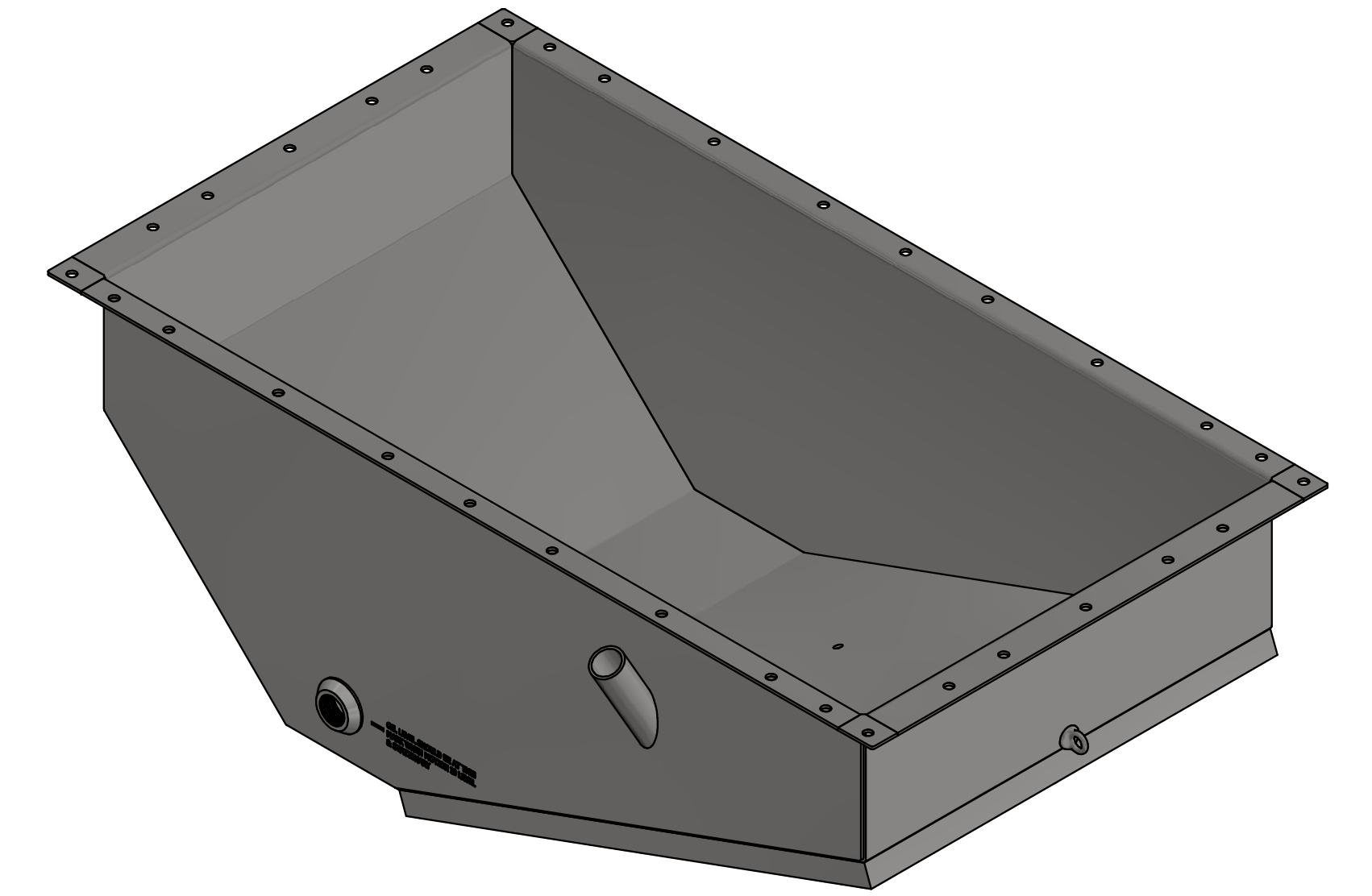
WHEN ORDERING PARTS:
GIVE TABLE SERIAL NUMBER FOUND ON TAG
NOTE ANY DIFFERENCE FROM THIS DIAGRAM



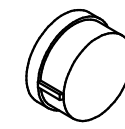
88M18 TOP COVER



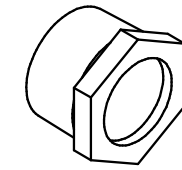
88M1 MAIN FRAME



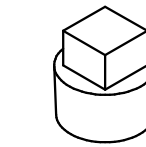
88M22 BOTTOM COVER



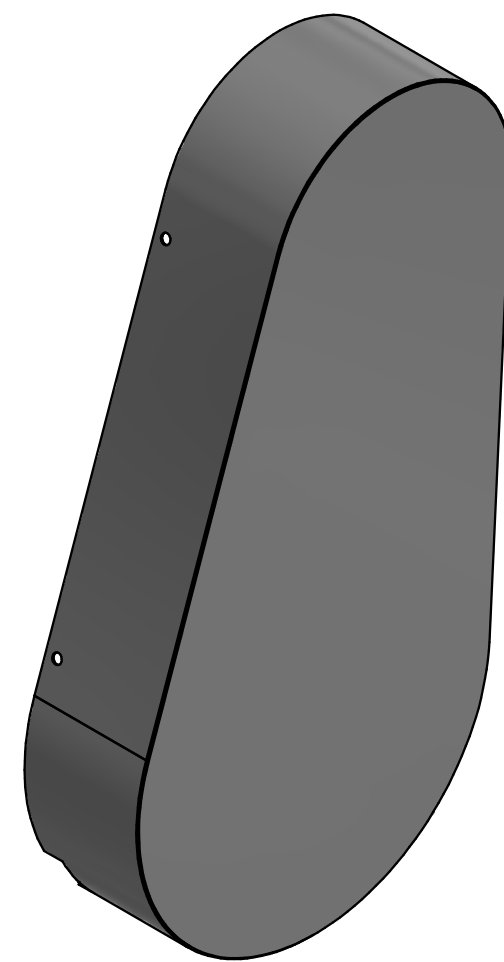
88M20BC BREATHER CAP
(FOR 88M22)



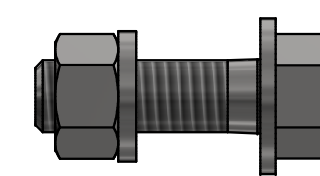
88M23 OIL SIGHT GAUGE
(FOR 88M22)



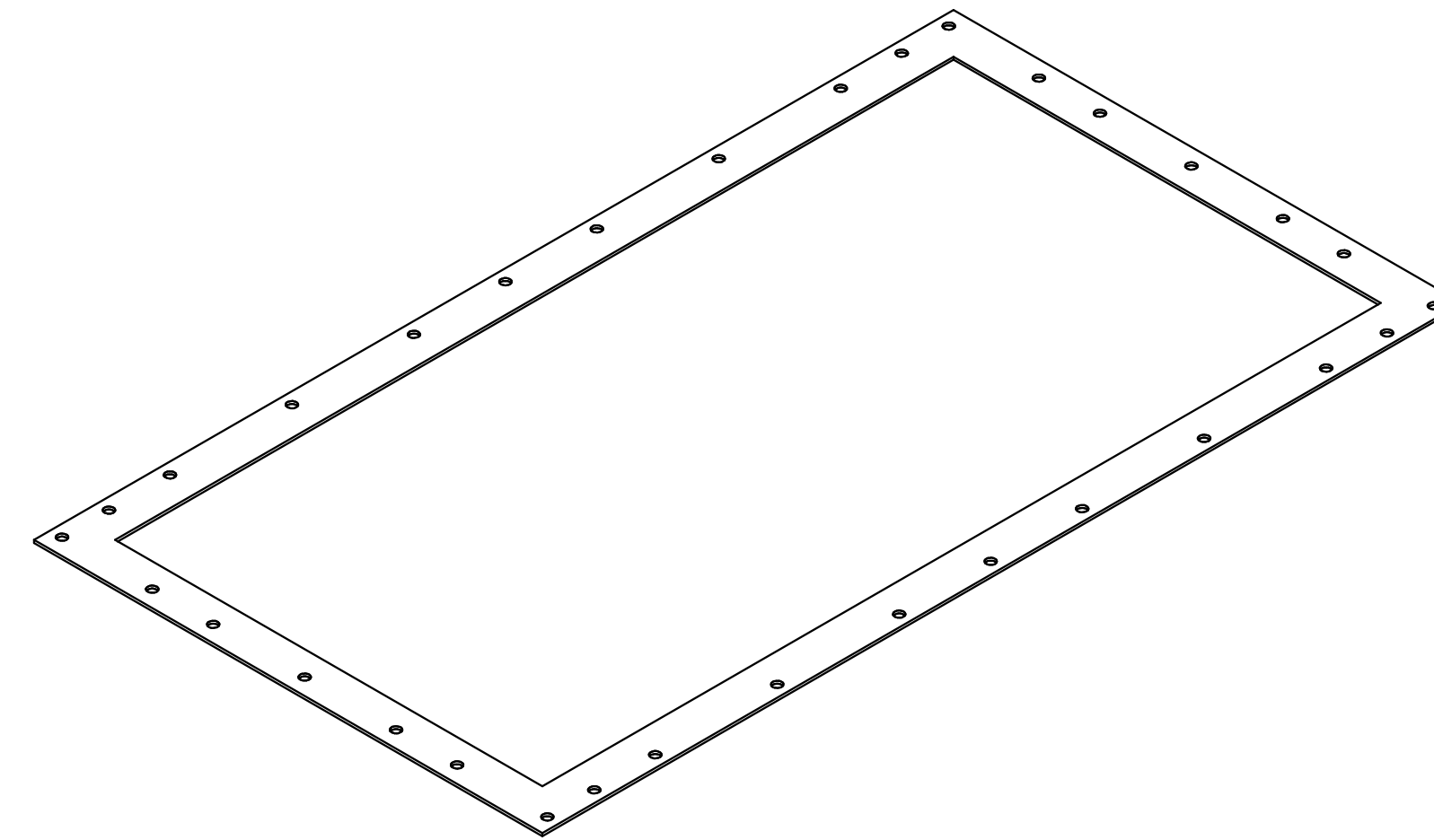
88M25 MAGNETIC DRAIN PLUG
(FOR 88M22)



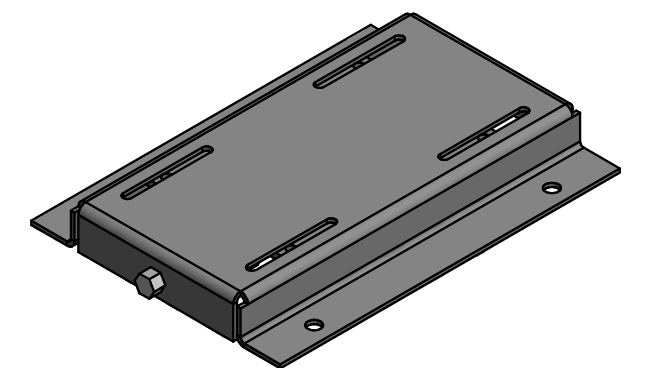
88M33 BELT GUARD



88M27 H.H.C.S. ASSEMBLY
3/8"-16UNC x 1 1/4",
FLAT WASHER, L'WASHER, HEX NUT
(FOR COVERS 88M18 & 88M22)



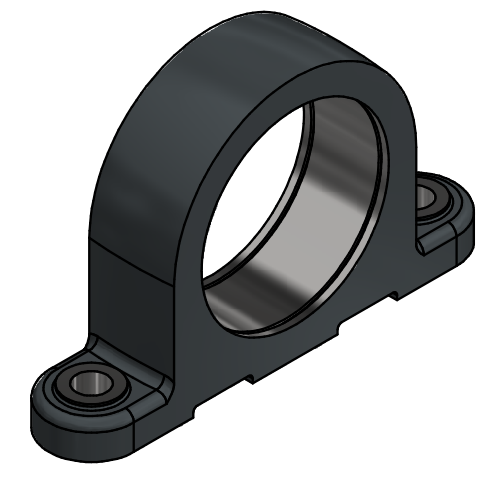
88M24 GASKET
(FOR 88M18 & 88M22)



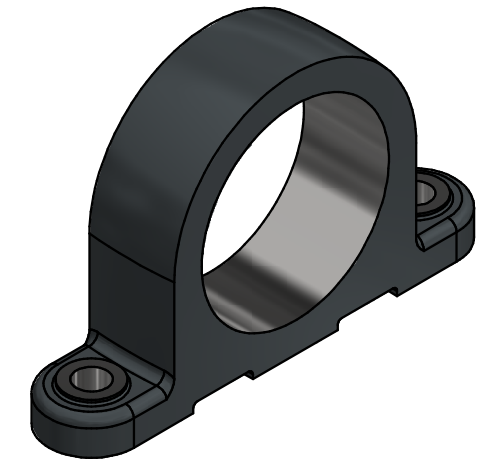
88M38 MOTOR BASE PLATE
SPECIFY ORDER NO.
WHEN ORDERING
TO MATCH MOTOR

MODEL 'T88M' MOTION PARTS DIAGRAM (INTERNAL PARTS)

WHEN ORDERING PARTS:
GIVE TABLE SERIAL NUMBER FOUND ON TAG
NOTE ANY DIFFERENCE FROM THIS DIAGRAM



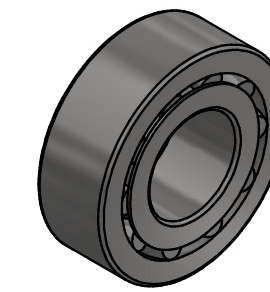
88M2H BEARING HOUSING (GROOVED)



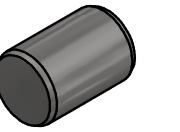
88M2F BEARING HOUSING (UNGROOVED)



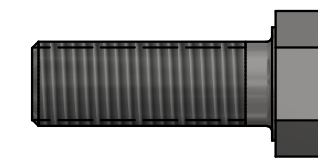
88M3 RETAINING RING
(FOR 88M2H)



88M6 ANTI-FRICTION BEARING
(FOR 88M2H & 88M2F)



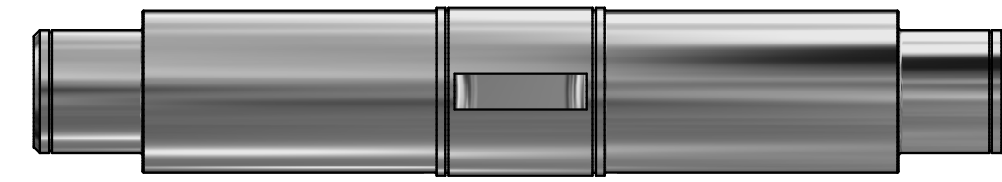
88M4 DOWEL PIN
(FOR 88M2H & 88M2F)



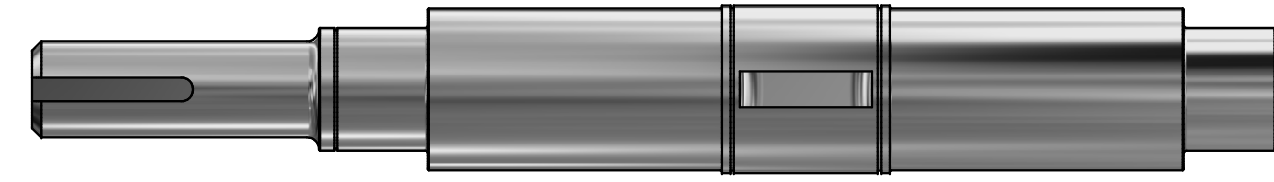
88M5 H.H.C.S.
7/8"-9 UNC x 2.5" HHCS
(FOR 88M2H & 88M2F)



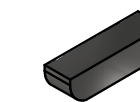
88M5A LOCK WASHER
7/8" L'WASHER



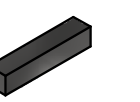
88M7 MAIN SHAFTS



88M7D MAIN SHAFT WITH DRIVE EXTENSION



88M8 3/4" x 2 3/4" SLED RUNNER KEY
(FOR 88M7D)



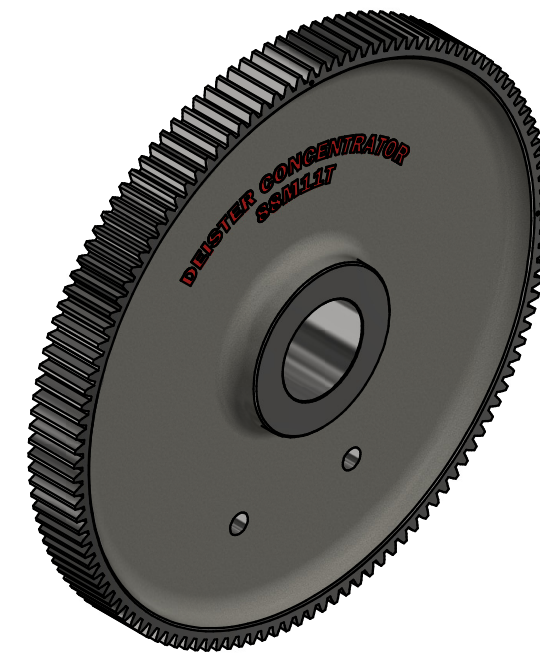
88M8A 1/2" x 2 1/2" SQUARE KEY
(FOR 88M7D)



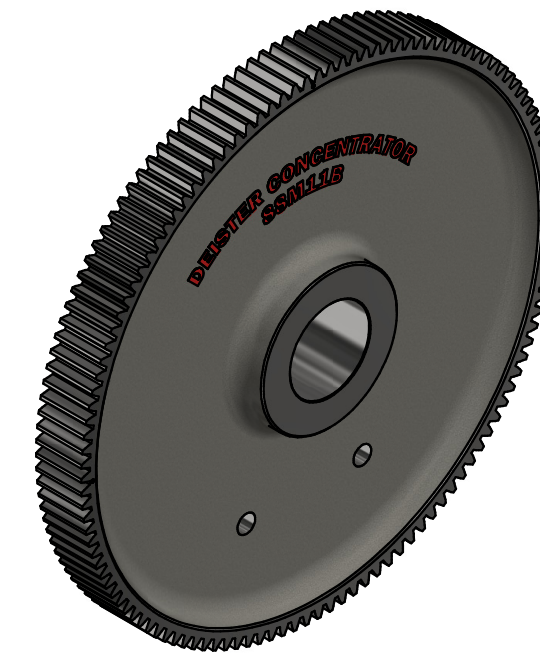
88M9 BEARING RETAINING RING
(FOR 88M7 & 88M7D)



88M10 GEAR RETAINING RING
(FOR 88M7 & 88M7D)



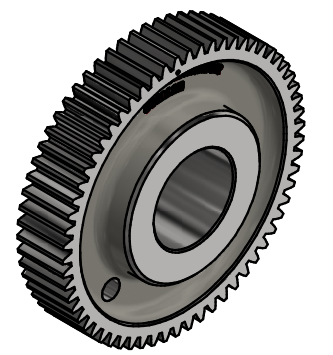
88M11T 124 TOOTH GEAR
(FOR TOP LOW SPEED SHAFT)



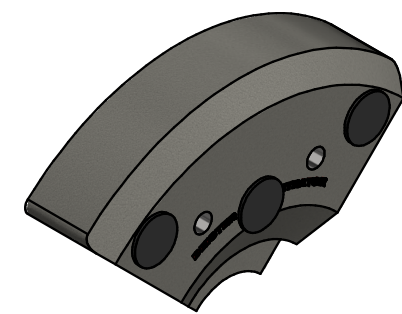
88M11B 124 TOOTH GEAR
(FOR BOTTOM LOW SPEED SHAFT)



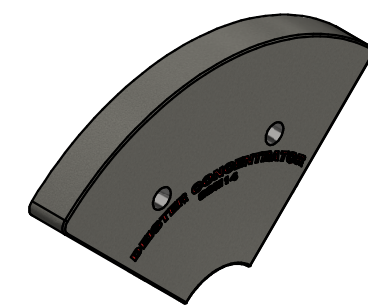
88M12T 62 TOOTH GEAR
(FOR TOP HIGH SPEED SHAFT)



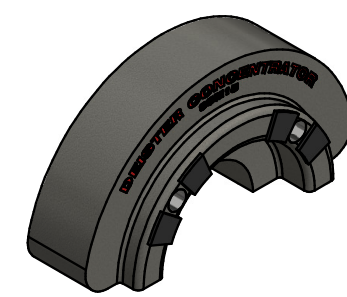
88M12B 62 TOOTH GEAR
(FOR BOTTOM HIGH SPEED SHAFT)



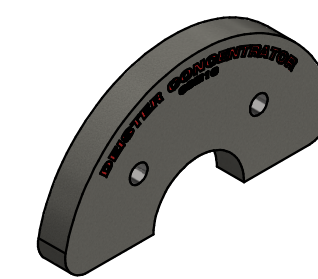
88M13-1 COUNTERWEIGHT



88M14-1 COUNTERWEIGHT



88M15-1 COUNTERWEIGHT

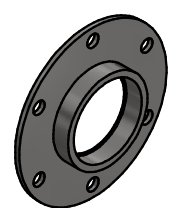


88M16-1 COUNTERWEIGHT



88M17 COUNTERWEIGHT BOLT

P/N	COUNTERWEIGHT BOLT			
	T999 SAND	T999 SLIME	T99 SAND	T99 SLIME
88M17	4			
88M17A	4	4	4	
88M17B		4	4	8



88M19 SHAFT SEAL PLATE

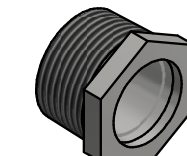
COUNTERWEIGHT CONFIGURATION				
CASTING ID	T999 SAND	T999 SLIME	T99 SAND	T99 SLIME
88M13-1	88M13	88M13	99M12	99M12
88M14-1	88M14	NOT USED	99M13	NOT USED
88M15-1	88M15	88M15	99M10	99M10
88M16-1	88M16	NOT USED	99M11	NOT USED



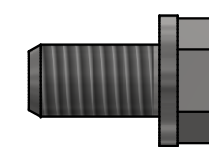
88M19S OIL SEAL
(FOR DRIVE SHAFT)



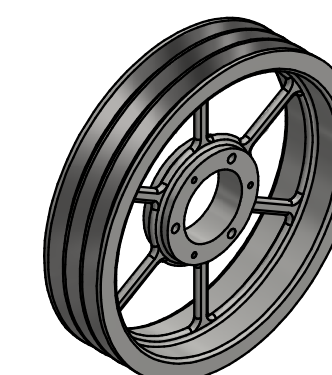
88M20BC BREATHER CAP



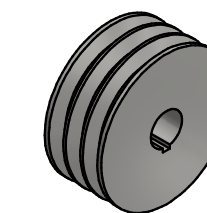
88M23 OIL SIGHT GAUGE



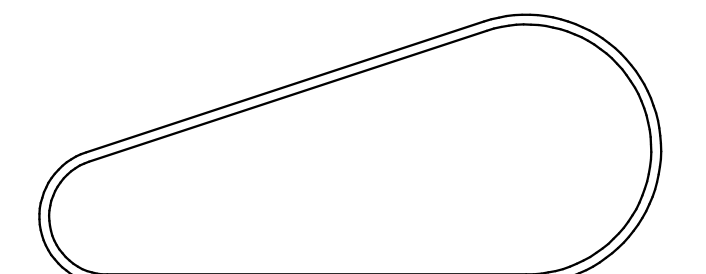
88M26 H.H.C.S. ASSEMBLY
3/8"-16UNC x 3/4" & L'WASHER
(FOR 88M19 & 88M20)



88M28 MOTION SHEAVE
11" P.D., 3 GROOVE
FOR B-SECTION BELTS



88M29 MOTOR SHEAVE
5.2" P.D., 3 GROOVE
FOR B-SECTION BELTS



88M30 DRIVE BELT SET
B-60, MATCHED