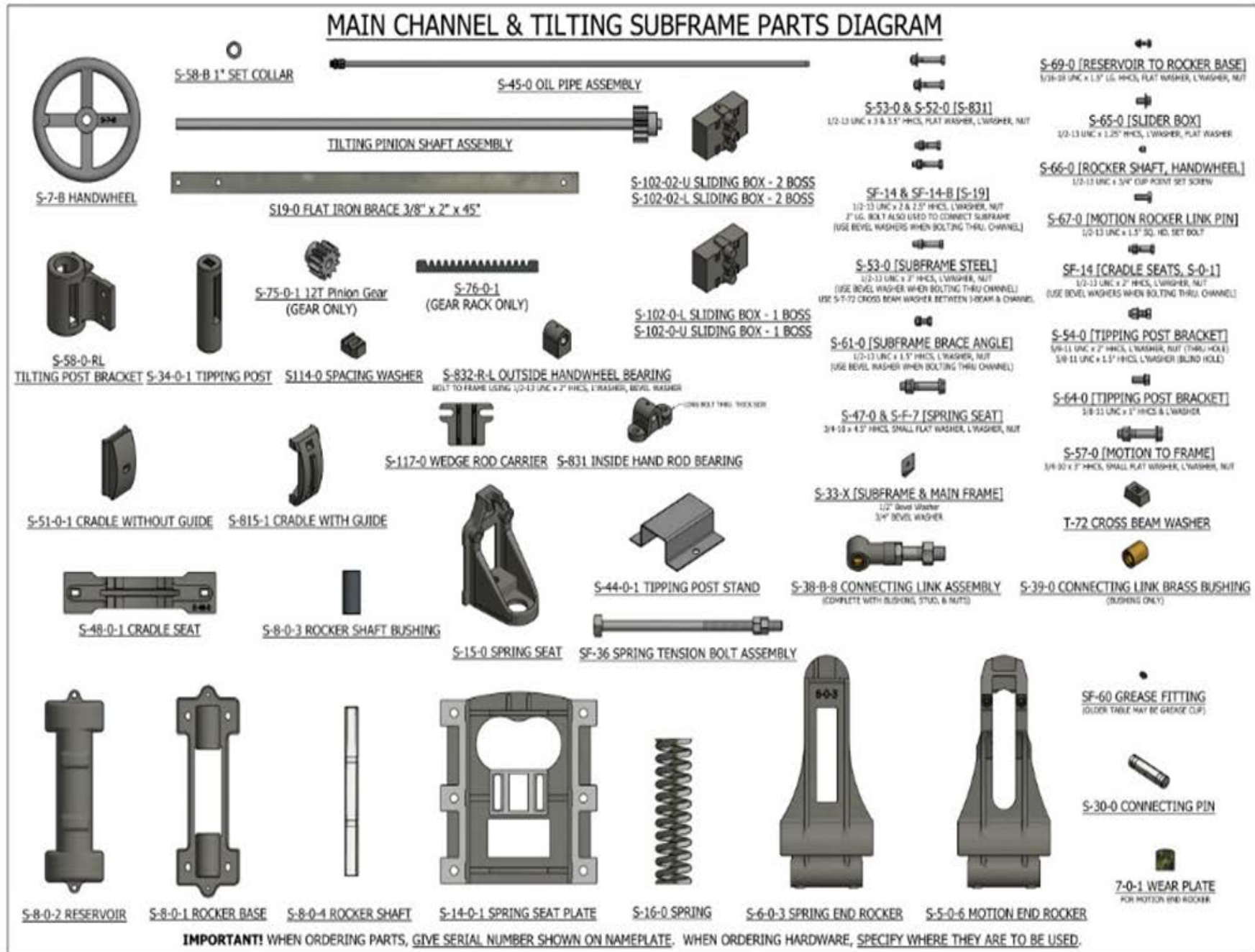


Parts for Main Channel and Sub-Frame *SuperDuty* Diagonal- Deck No. 6 Concentrating Table



Parts for Main Channel and Sub-Frame *SuperDuty* Diagonal- Deck No. 6

Concentrating Table

Part Number	Number of Pieces Per Table	Description	Part Number	Number of Pieces Per Table	Description
SF-7	6	3/4" x 4" Machine Bolt used on Spring Seat Plate	S-46-0	1	Hand Wheel Rod with Pinion
SF-14	9	1/2" x 2" Machine Bolt used on Sub-Frame	S-47-0	2	3/4" x 4-1/2" Machine Bolt used on Sprin
SF-20	22	1/2" Spring Lock Washer	S-48-0-1	3	Cradle Seat
SF-36	1	Spring Tension Bolt Assembly	S-51-0-1	2	Cradle without Guide
SF-60	1	Grease Fitting	S-52-0	3	1/2" x 3" Machine Bolt used on S 51-0 & S 831
S-7-B	1	Handwheel	S-53-0	3	1/2" x 3" Machine Bolt used on S 815 & S 831
S-5-0-6	1	Motion End Rocker	S-57-0	6	3/4" x 3" Machine Bolt used on Head Motion
S-6-0-3	1	Spring End Rocker	S-58-0-L	2	Tilting Post Bracket (2 used on Left Hand)
S-7-0-1	2	Steel Wearing Plate Insert for Rocker	S-58-0-R	2	Tilting Post Bracket (2 Used on Right Hand)
S-8-0-1	2	Rocker Base Complete with Bushings	S-61-0	8	1/2" x 1 1/2" Machine Bolt used on Cross Brace & Cradle Seat
S-8-0-2	2	Reservoir	S-64-0	4	5/8" x 1" Cap Screw used on Tipping Post Bracket
S-8-0-3	4	Rocker Shaft Bushing	S-65-0	8	1/2" x 1" Cap Screw used on Sliding Boxes
S-8-0-4	2	Rocker Shaft	S-66-0	4	1/2" x 1" Slotted Screw set used on Rocker Base
S-14-0-1	1	Spring Seat Plate	S-67-0	7	1/2" x 3/4" Set Screw used on Rocker and Collar
S-15-0	1	Spring Seat	S-69-0	4	3/8" x 4" Machine Bolt used on Reservoir
S-16-0	1	Spring 5/8" Wire	T-72	11	Cross Beam Washer
S-19-0	1	Flat Iron Brace 3/8" x 2" x 45"	S-75-0-1	1	Pinion for Hand Wheel Rod
S-30-0	1	Connecting Link Pin	S-76-0-1	1	Rack for Wedge Rod
S-33-X	18	Revel Washers, 3/4" Hole	S-815-1	1	Cradle with Guide
S-34-0	2	Tilting Post	S-831	1	Inside Hand Wheel Bearing
S-38-B-1	1	Connecting Link Only	S-832-L	1	Outside Boaring for Hand Wheel Rod (Left Hand)
S-38-B-3	1	Grooved Nut 1 3/8"	S-832-R	1	Outside Boaring for Hand Wheel Rod (Right Hand)
S-38-B-4	1	Jam Nut 1 3/8"	S-102-0-L	2	Sliding Box with One Boss for Lower Side
S-38-B-8	1	Connecting Link Complete	S-102-0-U	2	Sliding Box with One Boss for Upper Side
S-38-B-28	1	Stud Bolt 8" (#6 Only)	S-102-02-L	1	Sliding Box with Two Bosses for Lower Side
S-38-B-29	1	Stud Bolt 9" (#7 Only)	S-102-02-U	1	Sliding Box with Two Bosses for Upper Side
S-39-0	1	Brass Bushing for Connecting Link	S-114-0	2	Spacing Washer for Bracing Angle
S-44-0-1	2	Tipping Post Stand	S-117-0	1	Wedge Rod Carrier
S-45-0	3	Oil Pipe Assembly			