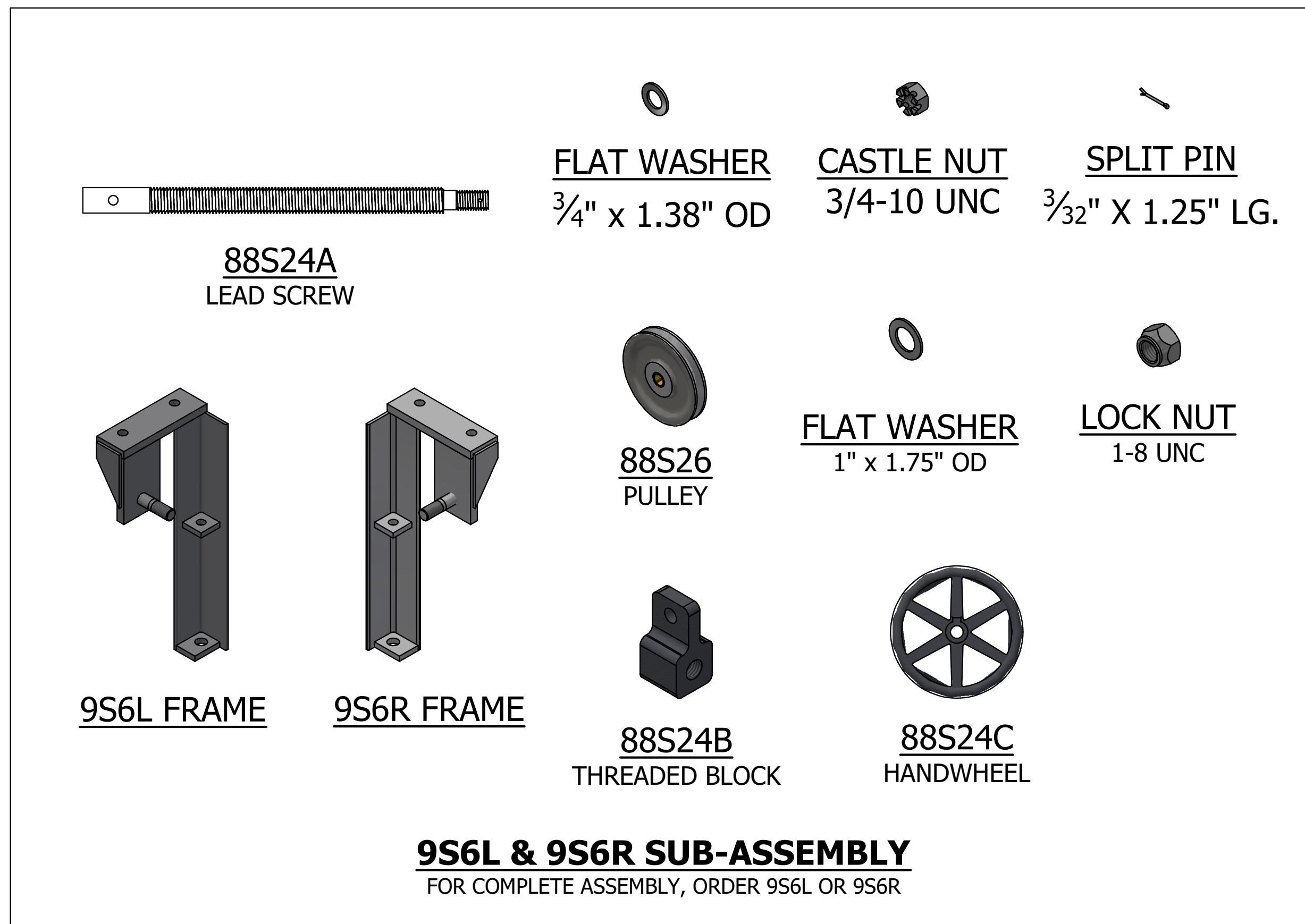


# MODEL 'T999' SUSPENSION PARTS DIAGRAM

WHEN ORDERING PARTS:  
GIVE TABLE SERIAL NUMBER FOUND ON TAG  
NOTE ANY DIFFERENCE FROM THIS DIAGRAM



**88S24A**  
LEAD SCREW

**9S6L FRAME**    **9S6R FRAME**

**88S24B**  
THREADED BLOCK

**88S24C**  
HANDWHEEL

**88S26**  
PULLEY

**FLAT WASHER**  
3/4" x 1.38" OD

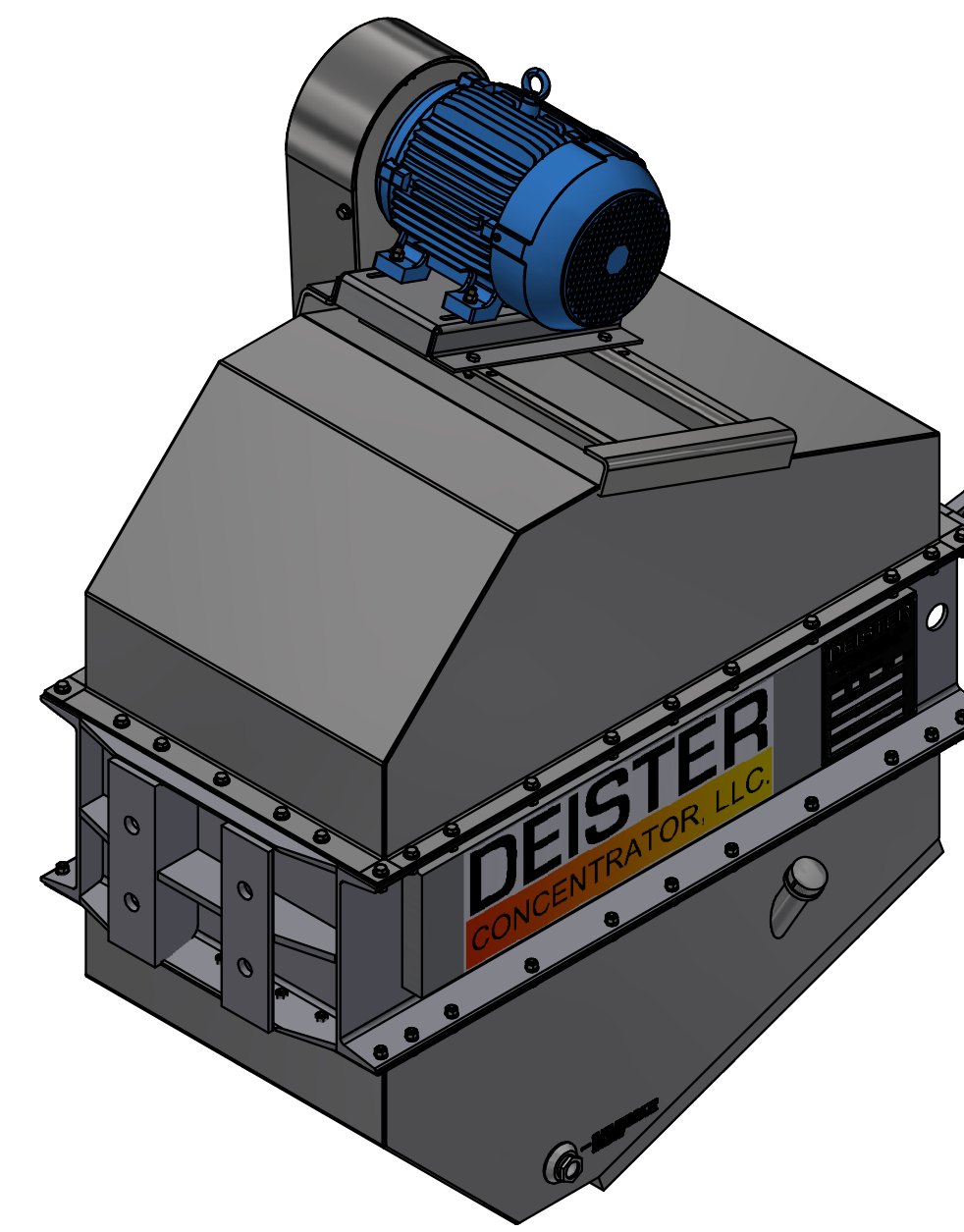
**CASTLE NUT**  
3/4-10 UNC

**SPLIT PIN**  
3/32" X 1.25" LG.

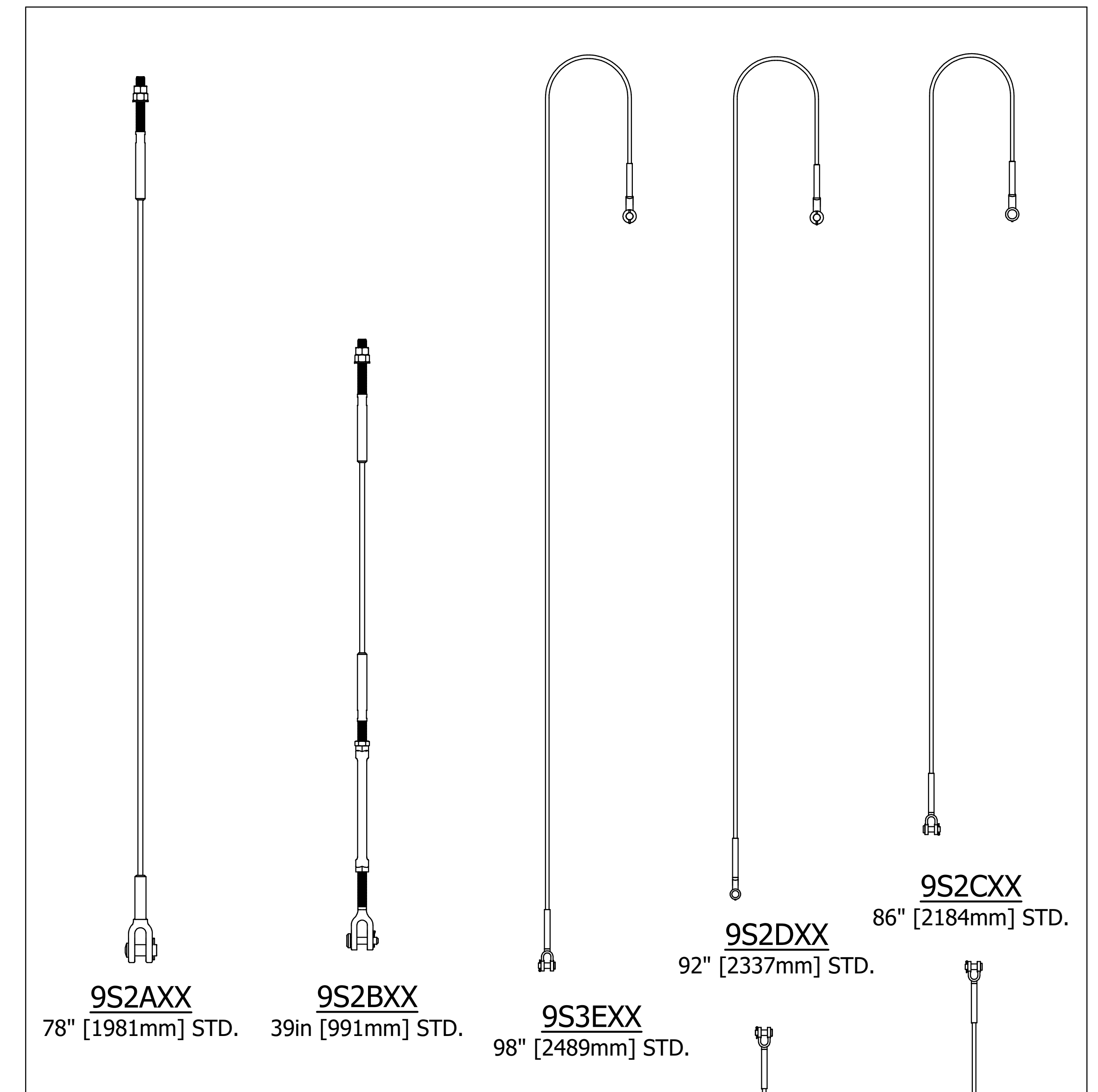
**FLAT WASHER**  
1" x 1.75" OD

**LOCK NUT**  
1-8 UNC

**9S6L & 9S6R SUB-ASSEMBLY**  
FOR COMPLETE ASSEMBLY, ORDER 9S6L OR 9S6R



**88M1**  
SEE T88M PARTS  
FOR DETAILED BREAK-DOWN



**9S2AXX**  
78" [1981mm] STD.

**9S2BXX**  
39in [991mm] STD.

**9S2DXX**  
92" [2337mm] STD.

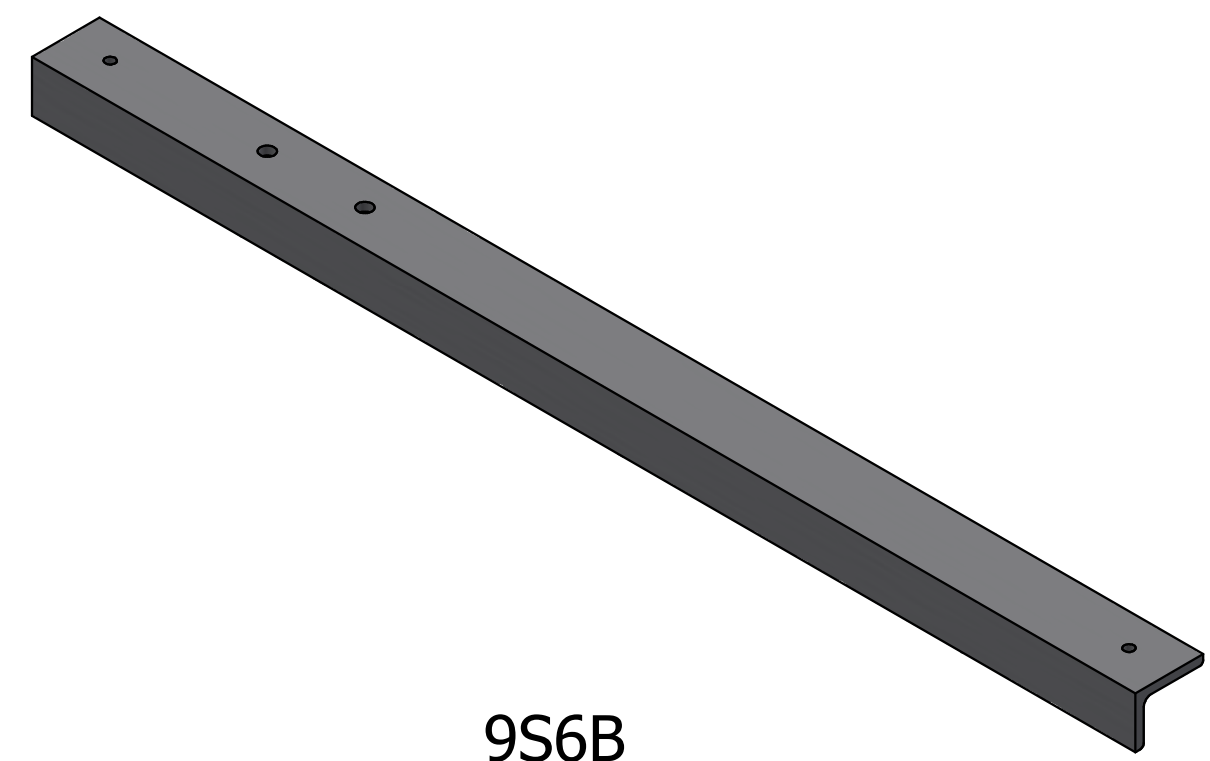
**9S2CXX**  
86" [2184mm] STD.

**9S3EXX**  
98" [2489mm] STD.

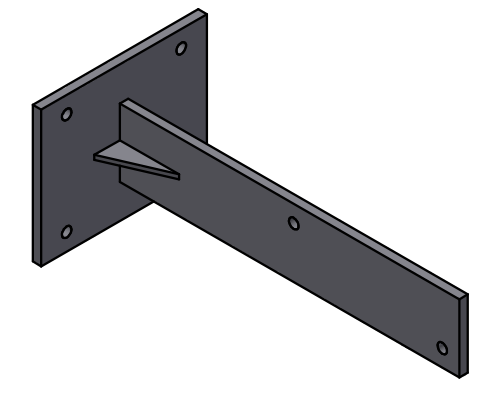
**9S2HXX**  
32in [813mm] STD.

**9S2GXX**  
38in [965mm] STD.

**9S2FXX**  
44in [1118mm] STD.

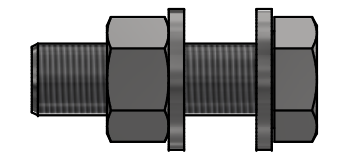
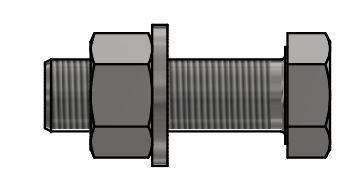


**9S6B**

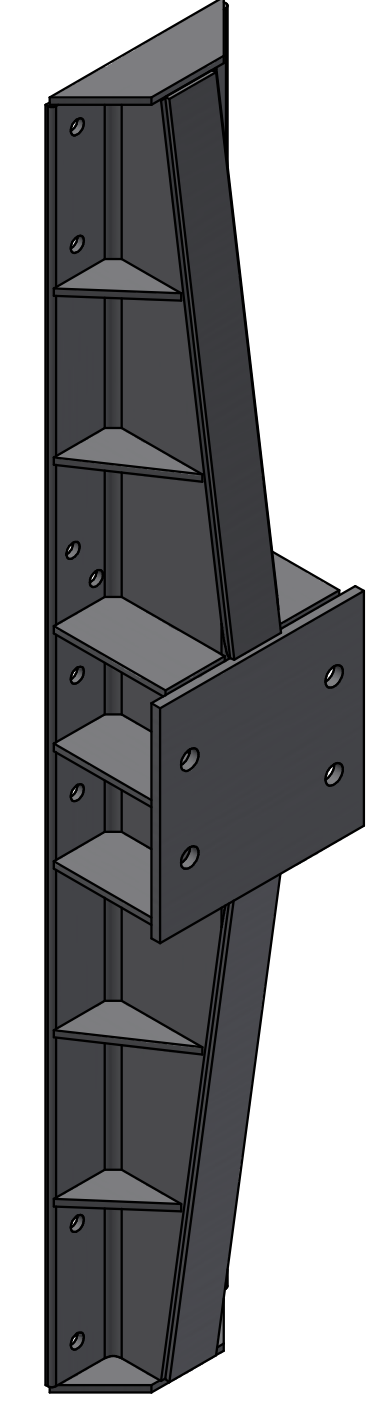


**9S7C**

**FEED CORNER BRACKET HARDWARE**  
1/2"-13UNC x 2" HEX CAP SCREW,  
LOCK WASHER, HEX NUT

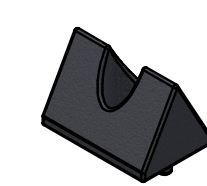


**SWIVEL CONNECTOR & CROSS ARM HARDWARE**  
3/4"-16UNF x 2 1/2" HEX HEAD CAP SCREW,  
2X FLAT WASHER, HEX NUT

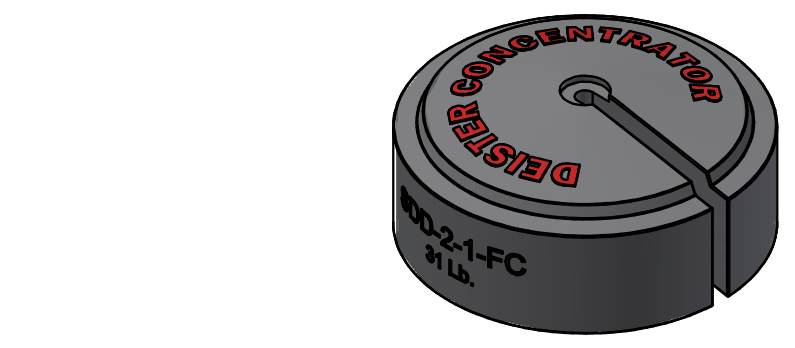
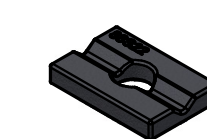


**9S4B**

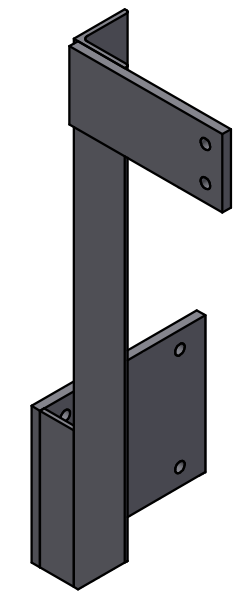
**88S21**  
KNIFE EDGE CASTING



**88S22**  
BEARING PLATE CASTING  
FOR 88S21

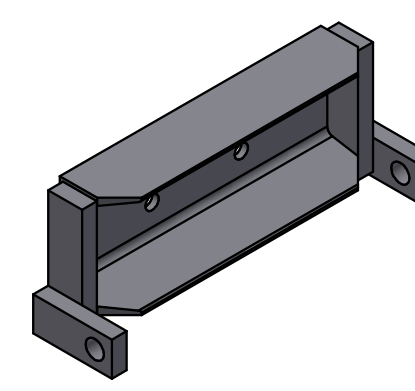
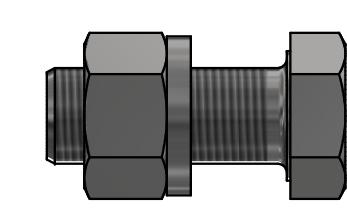


**88S32**

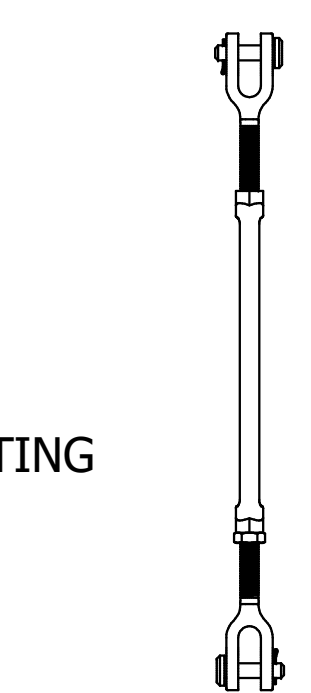


**9S7AR**

**MOTION TO YOKE HARDWARE**  
1"-14UNS x 2 1/2" HEX HEAD CAP SCREW,  
2X FLAT WASHER, HEX NUT



**9S4A**



**9S3**  
CONCENTRATE  
END CONNECTOR

**9S2SET COMPLETE WIRE ROPE SET**  
SPECIFY ORIGINAL ORDER NUMBER & CEILING HEIGHT  
SEE DWG. 999-SUSPENSION-02

FOR INDIVIDUAL WIRE ROPES, SPECIFY LENGTH IN INCHES WHERE  
"XX" SHOWN IN P/N  
EXAMPLE: 9S2A78 IS STANDARD MOTION SUPPORT ROPE FOR 999  
STANDARD 999 LENGTHS SHOWN FOR REFERENCE

THIS DRAWING IN ANY FORM IS THE  
PROPERTY OF DEISTER CONCENTRATOR, LLC.  
FURNISHED IN CONFIDENCE FOR TEMPORARY USE AND IS TO BE  
RETURNED IF REQUESTED. NOT TO BE INTERCEPTED OR ACCEPTED  
AND COPIED, USED FOR PRODUCTION OR DISCLOSED TO OTHERS  
WITHOUT THE EXPRESS CONSENT OF DEISTER CONCENTRATOR, LLC.