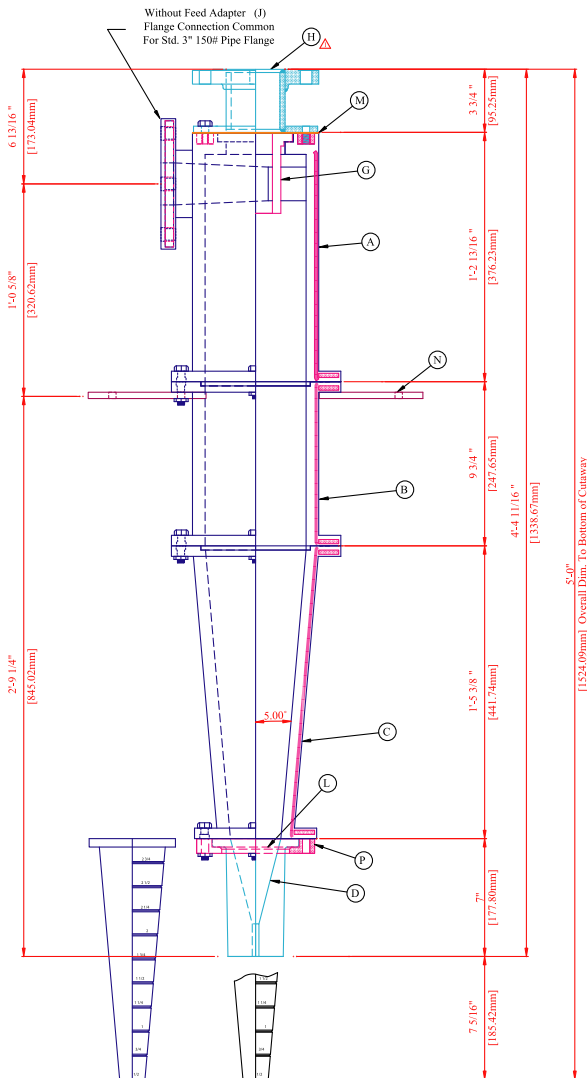


6" Cyclone



ITEM	DESCRIPTION
A	Feed Vortex Chamber
B	Straight Body Extension Chamber
C	10° Cone Chamber
D	Ceramic Underflow Orifice
P	Underflow Retainer
N	Mounting Bracket
G	38.1mmØ, (1.5"Ø) Vortex Finder
H	76.2mm (3") Overflow Pipe
K	Cutaway Underflow Orifice - Urethane
L	Under Flow Orifice Gasket Pack
M	Overflow Gasket
Average dead weight of unit: 41 Kg. / 91 Lbs.	
Live load (specific gravity = 1): 25 Kg. / 55 Lbs.	

Classifying Cyclone

- Casings Made From Glass Matt Reinforced Urethane
- Flange Bolted Body Connections
- Nihard Over Flow Orifice
- Urethane Cut-A-Way Underflow Orifice for Start Up
- High Alumina Permanent Under Flow Orifice
- Inlet Connects To Std. 3' Pipe - No Adapter Required
- Optional - Over flow Adapter With Liner



Deister Concentrator, LLC

6" Classifying Cyclone

Deister Classifying Cyclone Model C-6B-10B Capacity Curve

Inlet Area: 2.5 sq. in (1613 sq. mm)

